

**Town of Blue Hill, Maine
Request for Proposals
South Blue Hill Finger Float Project**

PROJECT DESCRIPTION

The Town of Blue Hill is seeking to replace four 6' x 16' finger floats at its South Blue Hill Wharf. A portion of the work will be funded by the Maine Department of Transportation's Small Harbor Improvement Project Grant program and the work will be subject to MaineDOT's standard specifications.

SCOPE OF WORK

See Attachment 1, "Project Specifications and Float Design Documents," for deliverables. The floats shall be delivered to the South Blue Hill Wharf, ready for deployment.

DEADLINE FOR PROJECT COMPLETION

Recognizing the short time frame between when a bid is expected to be awarded and this completion date, bids should include pricing for two alternative schedules for delivery.

Alternative 1: The floats and associated hardware shall be delivered no later than May 15, 2025.

Alternative 2: The floats and associated hardware shall be delivered no later than June 30, 2025.

SUBMISSION REQUIREMENTS

Please submit a proposal with the following information:

1. Company name and contact information
2. Relevant experience and qualifications
3. Price for four 6' x 16' floats and mooring chain for both alternatives
 - a. For alternative 1 (delivery by May 15, 2025)
 - b. For alternative 2 (delivery by June 30, 2025)

DELIVERY OF SUBMISSIONS

Proposals must be delivered by 4:00PM on April 14, 2025 to either:

PHYSICAL DELIVERY (MAIL, UPS, FEDEX):

Town Administrator
Blue Hill Town Office
18 Union Street
Blue Hill, Maine 04614

EMAIL DELIVERY:

jatwell@bluehillme.gov

Please mark the proposal (on the envelope or email subject line) "Finger Float Project Bid."

QUESTIONS

Questions may be emailed to jatwell@bluehillme.gov on or prior to April 9, 2025. All questions received by that date and the associated answers will be posted at <https://bluehillme.gov/bidsandoffers>.

Other

Qualified Disadvantaged Business Enterprises are encouraged to bid.

The Town and MaineDOT reserve the right to accept or reject any or all bids.

RFP Timeline:

April 3, 2025	RFP released
April 9, 2025	Last day to submit questions via email
April 14, 2025 4:00 PM	Bids due
April 14, 2025 5:45 PM	Public bid opening
April 15, 2025 8:00 AM	Bid selection and notification

**South Blue Hill Finger Float Project
Attachment 1**

Project Specifications and Float Design Documents

The Project

The South Blue Hill finger float project is to replace four 6' x 16' finger floats at the Town of Blue Hill's South Blue Hill wharf facility, together with replacement of the associated mooring chain and shackles. The eastern-most finger floats are used for short-stay tie-up (east side, facing Blue Hill Bay); the interior area between the finger float sets and the boat launch ramp are generally used for dinghy tie-up.

The intended configuration will be the same as for the existing floats, with two sets of two floats each extending north from the main (12' x 20') floats at the base of the gangway. (See Attachment 2 for a satellite image of the South Blue Hill Wharf area, including the four small finger floats to be replaced.)

The project shall include hardware, of similar specification to that of the individual floats, for attaching the floats to each other and to the main floats in the same configuration as shown on Attachment 2.

Float Design and Bill of Materials Documents

See Attachment 3, labeled "6' x 16' Finger Float Overview, for the float design specifications.

See Attachment 4, labeled "Bill of Materials," for the bill of materials specifications.

Mooring Chain

The float system shall be supplied with suitable chain and size- and load-appropriate shackles with specifications to be supplied to all bidders via an amendment to this Request for Proposals to be published no later than April 10, 2025.

**South Blue Hill Finger Float Project
Attachment 2**

Satellite Image of South Blue Hill Wharf Area



Attachment 3: 6' x 16' Finger Float Design

Notes:

Total Buoyancy: 4,272 lbs.

Reserve Buoyancy: 2,640 lbs. (27.5 psf)

Unloaded Freeboard: 19"

Floation: (6) 3048-16 Ace float drums

Framing & Skids: 4" x 8" #2 PTSYP

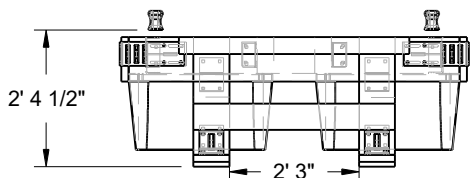
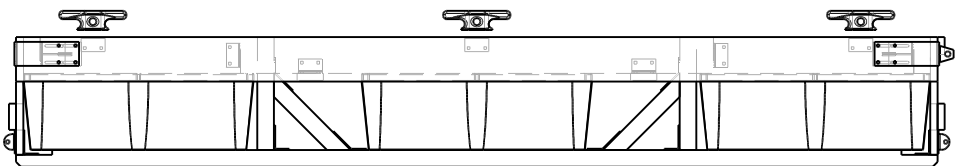
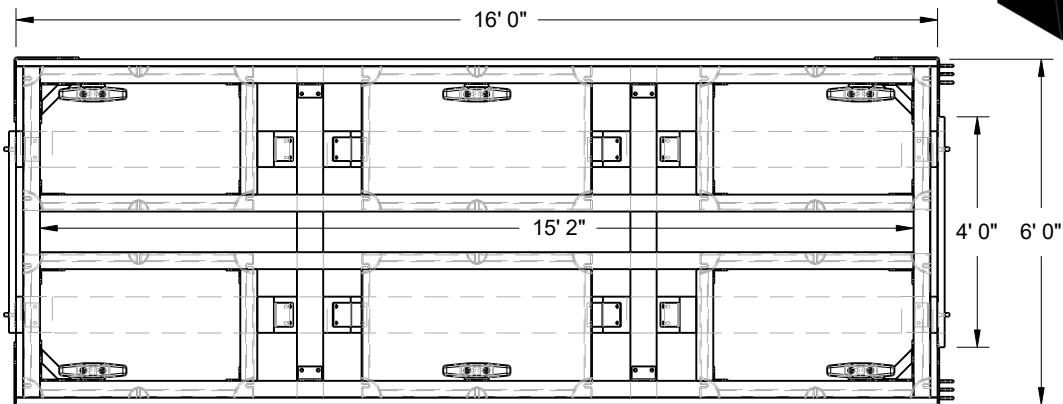
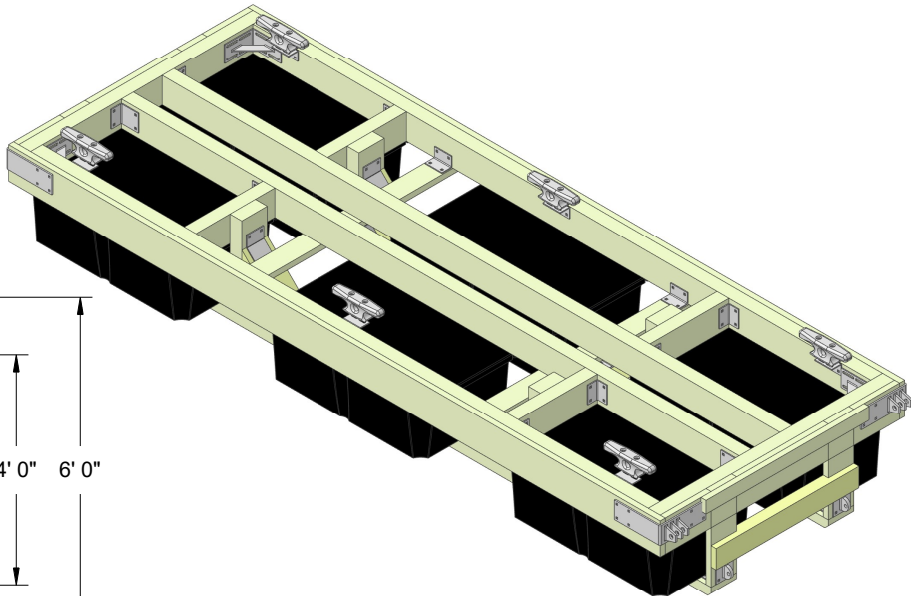
Skirt Boards: 2" x 10" #1 PTSYP

Decking: 2" x 6" #1 Select Plus (not shown)

Connection Hardware: 3/8" galv. steel

REVISIONS

ZONE	REV	DESCRIPTION	DATE	APPROVED
------	-----	-------------	------	----------



Custom Float Services
11 Wallace Ave.
South Portland ME 04106

DRAWN
Henri Gignoux

DATE
8/28/2024

CHECKED

QA

MFG

APPROVED

Town of Blue Hill
South Blue Hill Town Dock

6' x 16' Finger Float
Overview

SIZE
A

FSCM NO.

DWG NO.

REV

SCALE 1:1

SHEET 1 OF 1

Attachment 4: Bill of Materials

T of Blue Hill Floats

6x16

9/6/2024

Float Length (ft)	16
Width (ft)	6
Area (sq ft)	96
Est. Weight (lbs)	1632

Floatation Force Calcs

Drum Size	F304816
Max Bouyancy/drum	712
# of drums	6
Max Bouyancy	4,272
Reserve Bouyancy	2,640
Reserve Bouyancy/sq ft	27.5
Est Freeboard (in)	18.9

Style

6' x 16' Finger Float, 4X w skids

Description	CFS Part #	Type	Cut Quantity	Cut Length (ft)	Order Length (ft)	Order Quantity
Floatation	F304816	ACE	6	5	5	6
Stringers	FL4X8/16-ACQ	UC4B	4	15.75	16	4
End Members	FL4X8/12-ACQ	UC4B	2	5.46	12	1
Spanner Board	FL2x6/12ACQ.60	UC4B	2	6.04	12	1
Skid End Upright	FL2X8/12ACQ.60	UC4B	4	1.71	12	1
Skid Internal Upright	FL4X8/12-ACQ	UC4B	4	1.625	12	0.5
Skid Diagonals	FL4X8/12-ACQ	UC4B	4	1.89	12	0.5
Skids	FL4X8/16-ACQ	UC4B	2	16	16	2
Blocking	FL4X8/12-ACQ	UC4B	4	1.94	12	0.5
Skid Stiffener	FL4X8/12-ACQ	UC4B	2	3.50	12	0.5
Side Skirt	FL2X10/16-ACQ	UC4B	2	16	16	2
End Skirt	FL2X10/12-ACQ	UC4B	2	5.75	12	1
Margin Boards	FL2X6/16SP	UC4B	2	16	16	1
Decking	FL2x6/12SP	UC4B	34	5.58	12	17
45 degr Stiffener	F6H413	Galv.	8			8
Corner Clips	F6H414	Galv.	4			4
Corner Clips Jr	F6H414J	Galv.	12			12
Skid Stiffeners	F6H418	Galv.	8			8
Inside Corner Braces	FDH-IN	Galv.	4			4
Outside Corners no tab	F6H490	Galv.	2			2
Outside Corners w 3- tab	F6H492	Galv.	2			2
1" x 5.5' Tee Pin kits	F9H498	Galv.	2			2
Round Tee Tab	FDH-TM	Galv.	4			4
Cleat	FCLDG12	Galv.	6			6
Cleat Angle	FDH-CA	Galv.	6			6
1/2" x 3.5" Carr. Bolts	FBC012x0312	Galv.	30			30
1/2" x 4.5" Carr. Bolts	FBC012x4120	Galv.	40			40
1/2" x 6" Carr. Bolts	FBC012x6000	Galv.	20			20
1/2" x 6.5" Carr. Bolts	FBC012x0612	Galv.	40			40
1/2" x 10" Carr. Bolts	FBC012x0010	Galv.	40			40
1/2" x 4.5" Hex Hd Bolts	FBM012x0412	Galv.	12			12
Drum washers	FWN012	Nylon	40			40
1/2" Nuts	FNH012	Galv.	182			182
1/2" Flat Washers	FWF012	Galv.	182			182
Decking Screws	FSDSS31610x3T	SS	300			300
Material Totals			1018			982